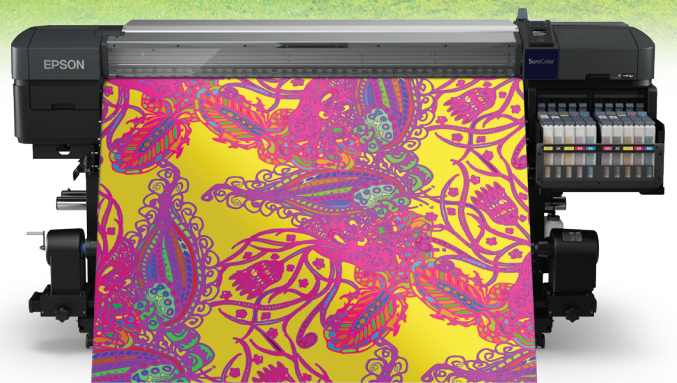


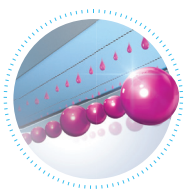
# REDEFINING VIBRANCY IN FABRIC PRINTS



SC-F9430



SC-F9430H



## Leading the Industry with Dynamic Fluorescent Printing.

The Epson SureColor SC-F9430 and SC-F9430H offer fluorescent\* brightness and colour density like never before, giving life to print applications such as fabric flags, fast fashion, and home furnishings such as curtains and cushions.

\*Fluorescent printing is only applicable with the Epson SureColor SC-F9430H

IT'S IN THE DETAILS.

**EPSON**  
EXCEED YOUR VISION

Pave the way to dynamic fabric prints with Epson's fluorescent\* textile printers. With the PrecisionCore printhead technology, you get precise control, resulting in the highest print quality and improved operational reliability. On-demand printing also presents the flexibility to deliver custom outstanding and vivid fabric designs in short print runs.

\*Fluorescent printing is only applicable with the Epson SureColor SC-F9430H



### New Dye-sub Fluorescent Ink

Epson's new genuine fluorescent dye-sub ink encompasses both fluorescent yellow and fluorescent pink ink to give you bright, consistent and high quality vivid prints on many types of fabric.

Epson's First Dye-sub  
Genuine Fluorescent Ink



### Epson Edge Print

Achieve striking prints with fluorescent yellow and pink on fabric with Epson's first genuine dye-sublimation ink solutions using the Epson Edge Print software.

## Epson Edge Print

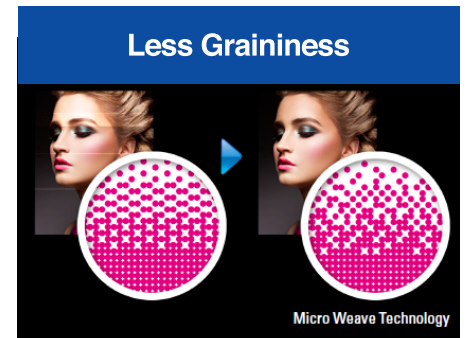
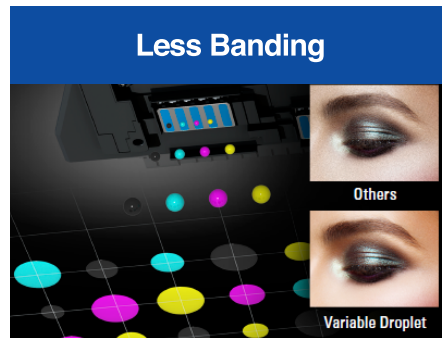
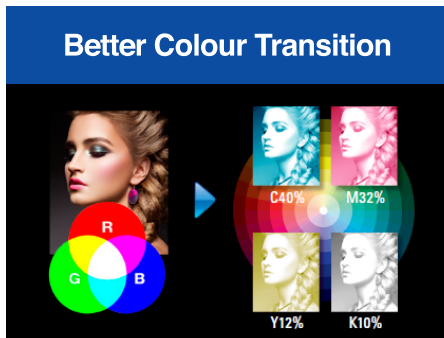
### Ease of Maintenance

Simply scan a QR code located on the printer and you will have a video instruction on the printer's maintenance process.



## High Quality Prints

With Epson's PrecisionDot Technology, our printers can produce high print quality with better colour transition, less banding, and less graininess.



## Fluorescent for Vibrantly Outstanding Prints

With the introduction of a genuine fluorescent solution, Epson's SC-F9430H offers fluorescent brightness and colour density like never before, giving life to print applications such as fabric flags, fast fashion, and home furnishings such as curtains and cushions.



Developed primarily for fast and high-volume printing of textiles, the Epson SC-F9430H also offers businesses the option of printing with two genuine fluorescent ink solutions (yellow and pink), bringing bright, vivid colours to the production of fabric flags, fast fashion, and home furnishings such as curtains and cushions. The SC-F9430 series is an evolution of trusted Epson print technology and provides enhanced quality with even greater productivity and reliability.

# SPECIFICATIONS

## SureColor SC-F9430 & SC-F9430H



| MODEL NUMBER                                 | SC-F9430 (C11CJ00402)   | SC-F9430H (C11CH99402)  |
|--|---|---|
| <b>Printer Width</b>                         | 64"   |   |
| <b>Printing Technology</b>                   | Dual PrecisionCore™ TFP® Printhead  |   |
| Printhead                                    | Dual PrecisionCore™ TFP® Printhead  |   |
| Nozzle Configuration                         | 360 nozzles x 4 channels x 2 head   | 360 nozzles x 5 channels x 2 head   |
| Maximum Resolution                           | 720x1440 dpi  |   |
| <b>Print Speed</b>                           |   |   |
| Production (2 pass)                          | Up to 60.1 m <sup>2</sup> /h (720 x 720 dpi)  | Up to 62 m <sup>2</sup> /h (360 x 720 dpi)  |
| Production (4 pass)                          | Up to 29.9 m <sup>2</sup> /h (720 x 720 dpi)  | Up to 32.1 m <sup>2</sup> /h (720 x 720 dpi)  |
| Production (6 pass)                          | Up to 20.7 m <sup>2</sup> /h (720 x 1440 dpi)   | Up to 21.9 m <sup>2</sup> /h (720 x 720 dpi)  |
| Production (8 pass)                          | Up to 15.6 m <sup>2</sup> /h (720 x 1440 dpi)   | Up to 15.8 m <sup>2</sup> /h (720 x 720 dpi)  |
| <b>Ink System</b>                            |   |   |
| Ink Type                                     | Epson UltraChrome™ DS dye-sublimation ink   | Epson UltraChrome™ DS6 dye-sublimation ink  |
| Colours                                      | 4 colours - Cyan, Magenta, Yellow, High Density Black   | 6 colours - Cyan, Magenta, Yellow, High Density Black, Fluorescent Yellow, Fluorescent Pink   |
| Ink Capacity                                 | Cyan, Magenta, Yellow, High Density Black: 1100ml ink pouch<br>Fluorescent Yellow, Fluorescent Pink: 1000ml ink pouch   |   |
| <b>Paper Handling</b>                        |   |   |
| Paper Handling                               | Rear roll feed (2"/3" core with max 250mm diameter and up to 45kg); Auto take-up reel   |   |
| Printable Area                               | Max printing width: 1615.6mm; Side Margin: 5mm both sides, 10mm with media holding guides   |   |
| Media Width                                  | 300.0 mm (11.8") - 1625.6 mm (64")  |   |
| Media Thickness                              | Up to 1 mm  |   |
| Control Panel                                | 2.7" Colour LCD   |   |
| <b>Connectivity</b>                          |   |   |
| Printer Interfaces                           | Hi-Speed USB, 100BASE-TX /1000BASE-T  |   |
| Printer Languages                            | Standard: ESC/P raster  |   |
| Memory                                       | 512MB main + 128MB network  |   |
| Software                                     | Bundled in CD (Windows Only): CD installer, Epson communication Driver, Epson manual Launcher, Operators Guide, General Information, Epson Control Dashboard, EpsonNet Setup, EpsonNet Config, EpsonNet Print, Software Updater, DVD(Epson Edge Print bundle SKU only) Epson Edge Print, Epson Control Dashboard, Epson Communication Driver<br><br>Web Delivery (Mac and Windows): Windows and Mac: CD installer, Epson communication Driver, Epson manual Launcher, Operators Guide, General Information, Epson Control Dashboard, EpsonNet Setup, EpsonNet Config, EpsonNet Print, Software Updater, LFP Accounting Tool |   |
| <b>Power and Operating Requirements</b>      |   |   |
| Power Requirements                           | AC 100-120V AC200-240V 50/60Hz  |   |
| Power Consumption                            | Operating: Approx. 570W;<br>Ready: Approx. 340 W; Sleep:<br>Approx. 14 W; Power Off: Approx. 1.0 W  | Operating: Approx. 600W;<br>Ready: Approx. 380 W; Sleep:<br>Approx. 14 W; Power Off: Approx. 1.0 W  |
| Recommended Operating Temperature & Humidity | Operating: 15°C to 35°C, Storage: -20°C to 60°C   |   |
| <b>Printer Dimensions</b>                    |   |   |
| Dimensions                                   | 2,620 x 934 x 1,332 mm (WxDxH)  |   |
| Weight                                       | 290kg (without ink)   |   |
| <b>Bundled Items</b>                         | Substrate Support System and Ink Supply System (C12C934951), Initial Ink Pack Set 10 (C12C934741) x2  | Substrate Support System and Ink Supply System (C12C934971), Initial Ink Pack Set 10 (C12C934741) x2, Initial Ink Pack Set 11 (C12C934991) x1 |
| <b>Warranty</b>                              | 1 year  |   |

### Dimensions & Weight

**SC-F9430 (C11CJ00402)**  
Weight: 290kg (without ink)



### Ink Cartridge Compatibility

#### 1.1L Ink Packs

|                      |            |
|----------------------|------------|
| • High Density Black | C13T46H800 |
| • Cyan               | C13T46H200 |
| • Magenta            | C13T46H300 |
| • Yellow             | C13T46H400 |

### SC-F9430H (C11CH99402)

Weight: 290kg (without ink)



### Ink Cartridge Compatibility

#### 1.1L Ink Packs

|                      |            |
|----------------------|------------|
| • High Density Black | C13T46H800 |
| • Cyan               | C13T46H200 |
| • Magenta            | C13T46H300 |
| • Yellow             | C13T46H400 |

#### 1L Ink Packs

|                      |            |
|----------------------|------------|
| • Fluorescent Yellow | C13T46H600 |
| • Fluorescent Pink   | C13T46H500 |

### Supplies & Optional Accessories

|                   |            |
|-------------------|------------|
| Maintenance Kit   | C13S210063 |
| Head Cleaning Set | C13S210051 |
| Waste Ink Bottle  | C13T724000 |
| Cleaning Stick    | C13S090013 |
| Clean Room Wiper  | C13S090016 |



© 2019 Epson Singapore Pte Ltd. All Rights Reserved.  
Reproduction in part or in whole, without the written permission from Epson, is strictly prohibited. EPSON and EXCEED YOUR VISION are registered trademarks of Seiko Epson Corporation. All other product names and other company names used herein are for identification purposes only and are the trademarks or registered trademarks of their respective owners. Epson disclaims any and all rights in those marks. Print samples shown are simulations only. Specifications and product availability are subject to change without notice and may vary between countries. Please check with local Epson offices for more information.

Dealer's Stamp

Information correct at time of printing  
Printed January 2020



To find out more, visit [www.epson.com.my/largeformat](http://www.epson.com.my/largeformat) or call 1800-81-7349 (Toll-Free).

EpsonMalaysia EpsonSoutheastAsia

Check for your warranty terms at [www.epson.com.my/warrantync](http://www.epson.com.my/warrantync)

Epson Malaysia Sdn Bhd (211204-X) 3rd Floor, East Tower, Wisma Consplant 1, No. 2, Jalan SS16/4, 47500 Subang Jaya, Selangor Darul Ehsan. Tel: 603-56 288 288 Fax: 603-56 212 088  
Epson is the registered trademark of Seiko Epson Corporation. All other product names and other company names used herein are for caption purposes only and are the trademarks or registered trademarks of their respective owners. EPSON disclaims any and all rights in those marks. Scan/Print samples shown here are simulations. Specifications are subject to change without notice.